

A Complete Guide To Software Testing Life Cycle



Software Testing Life Cycle

The software testing life cycle or STLC is the sequence of activities performed during the software testing process. Among the common misconceptions, software testing is not a one-time activity but a series of activities performed across the entire software development life cycle (SDLC).



How is STLC More Effective than Traditional Methods of Software Testing?

QA or software testing is performed after the product development phase and before releasing the product to the market.



How Does STLC Differ from SDLC?

SDLC is the set of activities performed when developing software or applications. In essence, STLC is a part of the SDLC and restricts its activities to the software testing part.



SDLC Comprises The Following Tasks

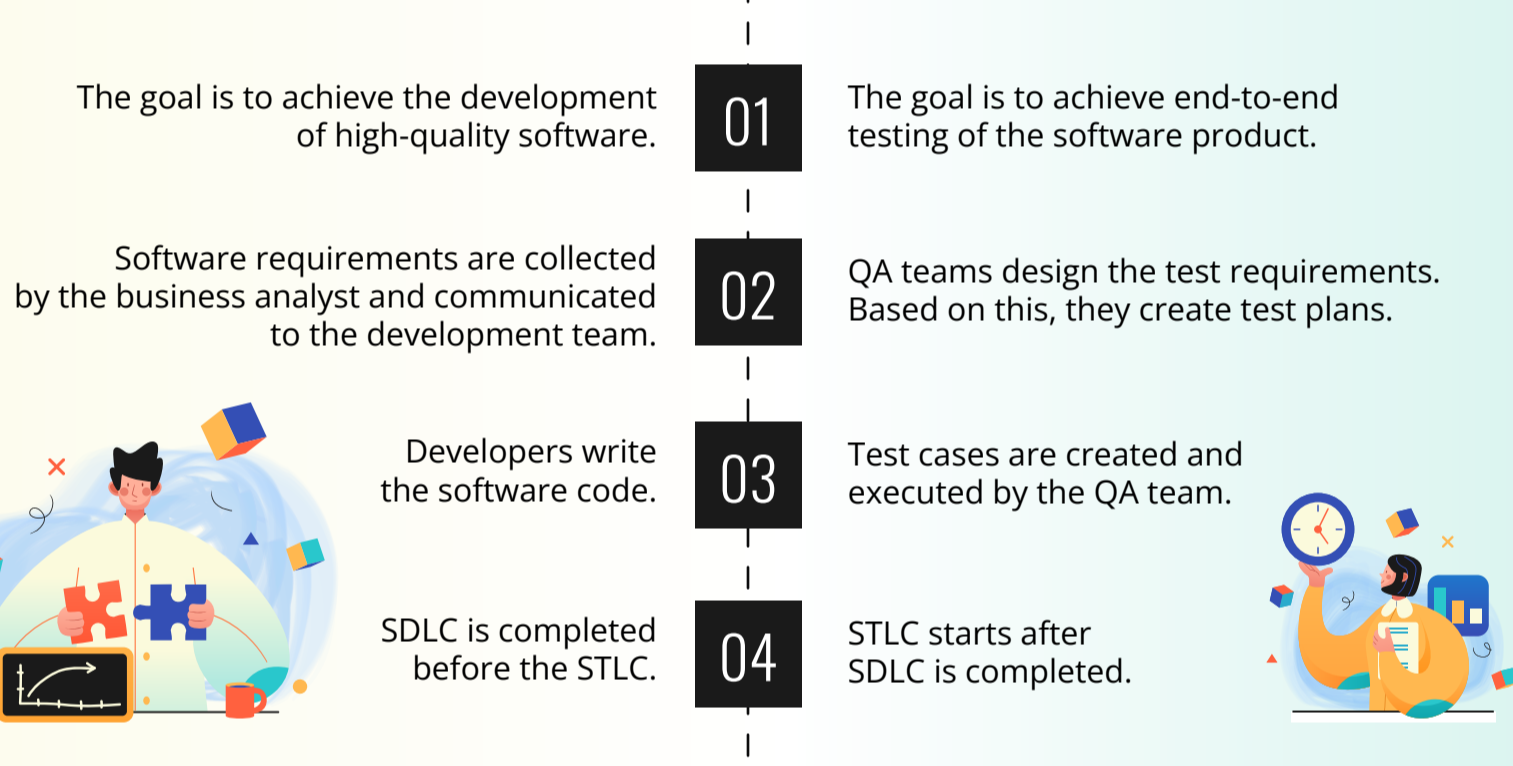
- 01 Gathering software requirements
- 02 Designing the software
- 03 Building and testing the software product
- 04 Updating and maintaining the software code
- 05 Deploying the software to the production environment



On The Other Hand, STLC Comprises

- 01 Test requirement analysis
- 02 Test planning and development
- 03 Setting up the test environment
- 04 Executing the test cases

Here are other notable differences between SDLC and STLC



6 Phases of the Software Testing Life Cycle



Requirement Analysis 01.

Requirement analysis is the first step in the STLC. In this phase, software testers must understand the product requirements that need testing.

Test Planning 02.

Test Planning phase the QA team creates the test plan based on the testing requirements. Test planning effectively converts the insights from the requirements phase into a documented test strategy.

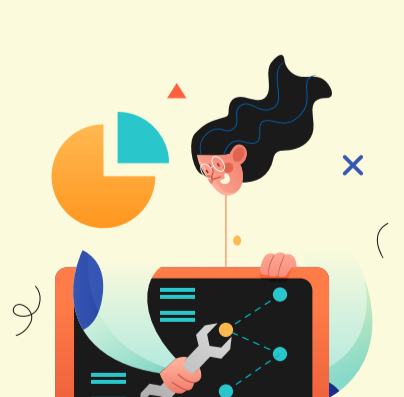


Test Case Development 03.

After the test planning phase, the test case development phase is all about creating the test cases based on the test plan and requirements.

Test Environment Setup 04.

Effective software testing requires a complete test environment comprising servers, test frameworks, and software tools.



Test Execution 05.

In this phase, the software application is ready for testing according to the defined test plan. This phase involves executing the test cases to identify and log any software bugs or defects.

Test Closure 06.

This is the final phase of the STLC. This phase marks the end of test case execution and final product delivery.



An efficient STLC can enhance the efficiency of software testing and the overall product quality.

